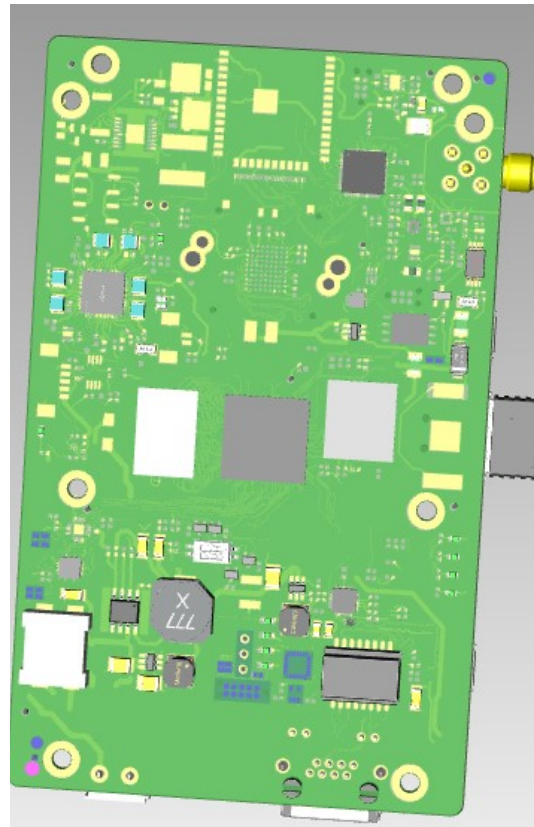
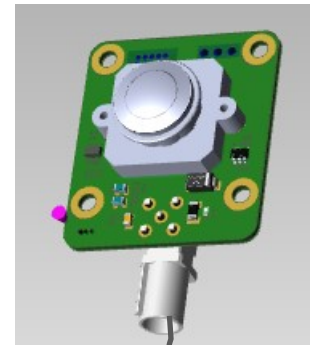


LYNCS-AI

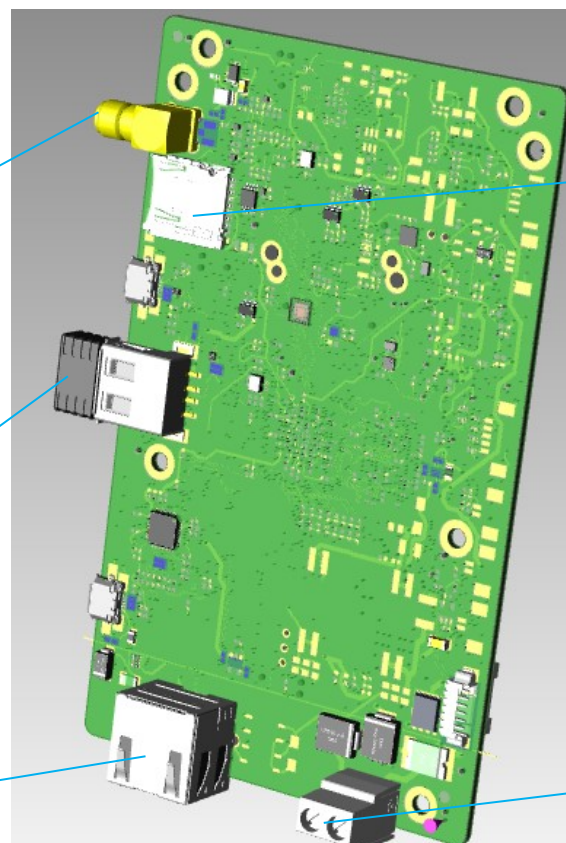
low power multipurpose imaging platform



CMOS
AS0149 (FPD-Link)



Coaxial
Up to 10m
15m in development



Coaxial link FPD-Link compliant
Connector FAKRA compliant
Connector SMA compliant

WiFi (USB)

SD Card

Ethernet
10/100 Mbit/s

Power 8 - 24V
Left -
Right +

Specifications

Dimensions	125 x 76 mm
Weight	max 100g
Operating temperature	With button cell: -30 to +70°C Without button cell: -40 to +85°C
Power consumption (12V)	350mA max, 4W max
CMOS	1280x800 HDR
CPU	i.MX 8M 4 cores @ 1.60GHz
RAM	2GB LPDDR4 (more on demand)
OS	Linux 5.15, SDK available
SD Card (optional)	mini SDHC
Wi-Fi (optional)	802.11 b/g/n, access point or connected to a router
Sensors (optional)	accelerometer, magnetometer, photometer

Power supply

External on 6 points connector or screw terminal (certified ES1/PS2)	8 to 24V (max 4W)
---	-------------------

Connectivity

UART via USB	board fully controllable through an API
ONVIF / RTSP	Profile S compliant for remote surveillance
HTTP	web user interface with either Chrome, Firefox or Safari

Embedded image processing

Vehicle counting and classifying	6 classes classifier : car, bus, truck, van, motorbike and bi-cycles
People counting	Select on scene counting zones and evaluate flows direction
License plate recognition	French license plates only. More on demand
Motion detection	Select on scene zones to monitor